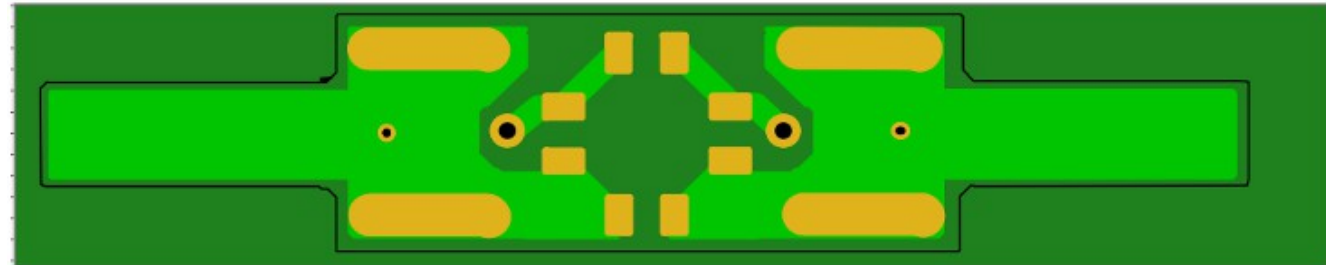
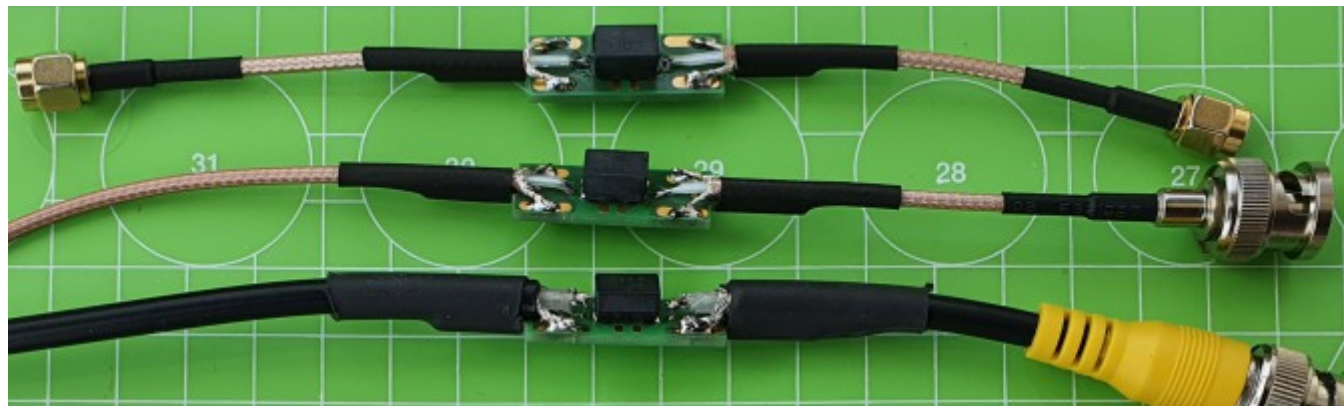


## QRP-Balun 1,8 MHz bis 52 MHz

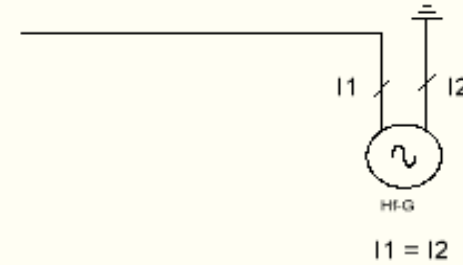
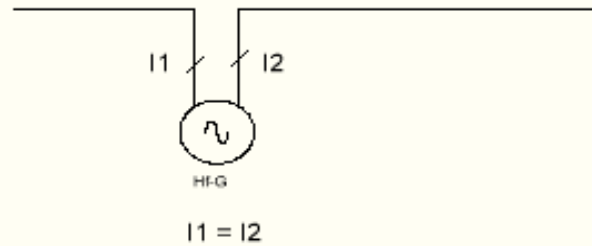
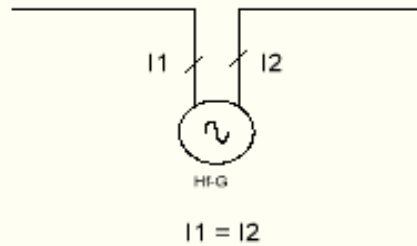
Die 100k Widerstände  
vermeiden für alle  
Varianten



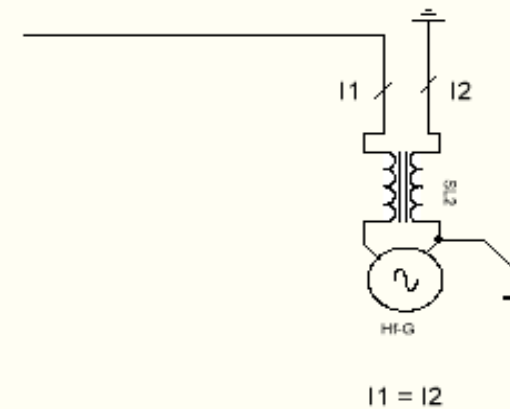
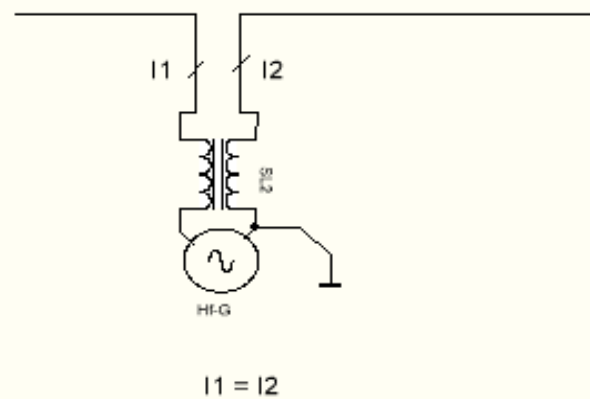
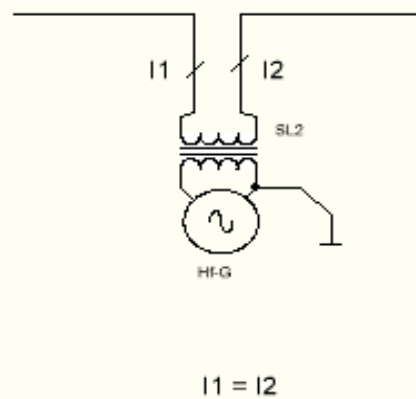
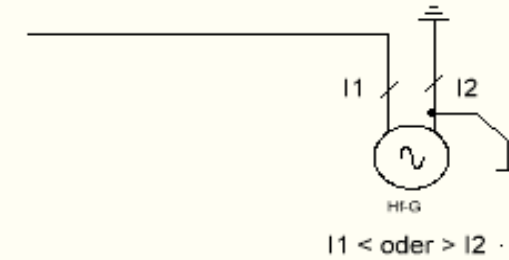
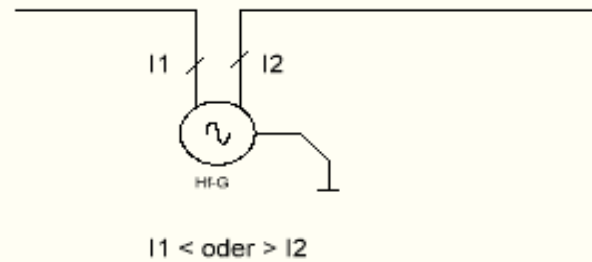
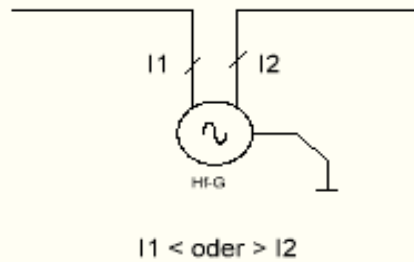
eine elektrostatische  
Aufladung  
der Antenne



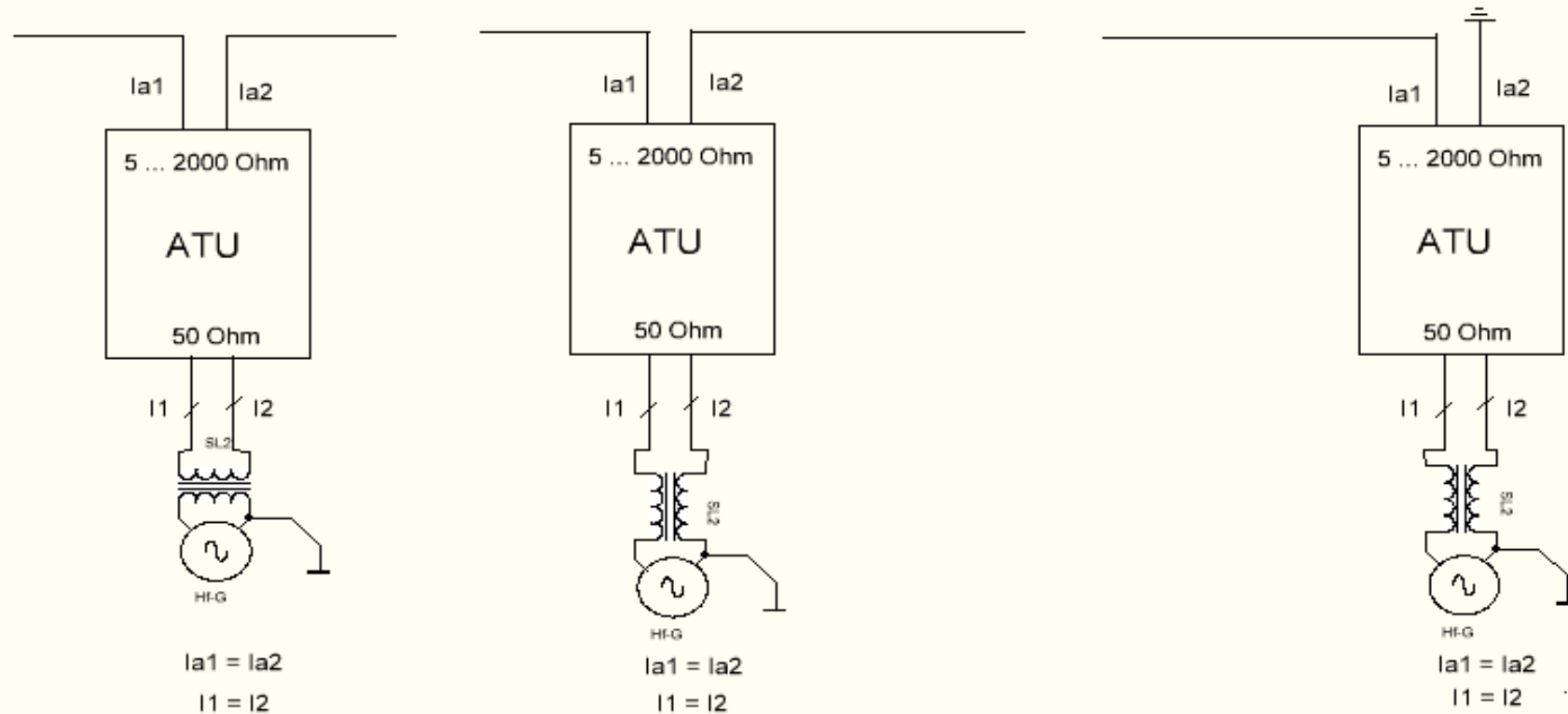
# Erdfreie Antennenspeisung



**Alle Antennen die erdfrei gespeist werden sind symmetrisch  $I_1 = I_2$**



# Erdfreie Antennenspeisung

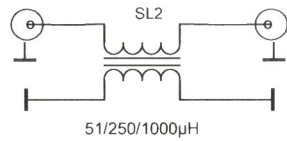


**Alle Antennentuner erdfrei betrieben sind symmetrisch**

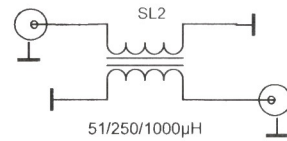
# Erdfreie Antennenspeisung

## Prüfung SL2 - Balun

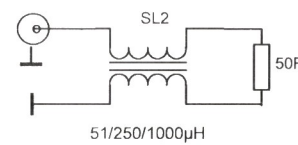
S21 - Prüfung Übertragungsverluste



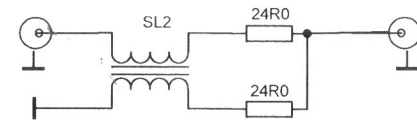
1:1 - S21 - Prüfung Übertragungsverluste



Prüfung SWR

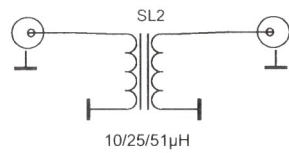


C - Prüfung Sperrdämpfung

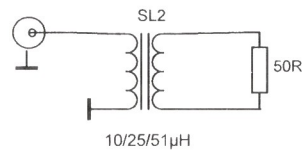


## Prüfung SL2 - Übertrager

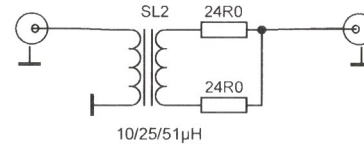
S21 - Prüfung Übertragungsverluste



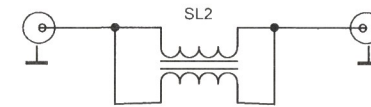
Prüfung SWR



C - Prüfung Sperrdämpfung



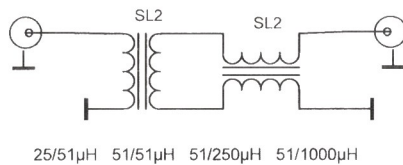
## WE - Prüfung



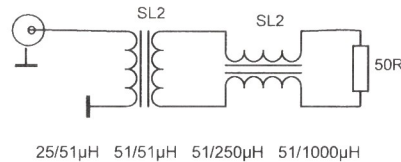
- WE-SL2 - 744226 - 10µH
- WE-SL2 - 744228 - 25µH
- WE-SL2 - 744227 - 51µH
- WE-SL2 - 744224 - 250µH
- WE-SL2 - 744222 - 1000µH

## Prüfung SL2 - Übertrager/ Balun

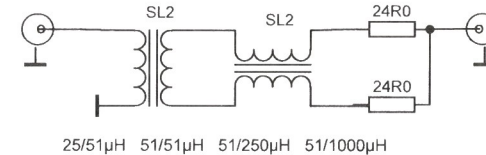
S21 - Prüfung Übertragungsverluste

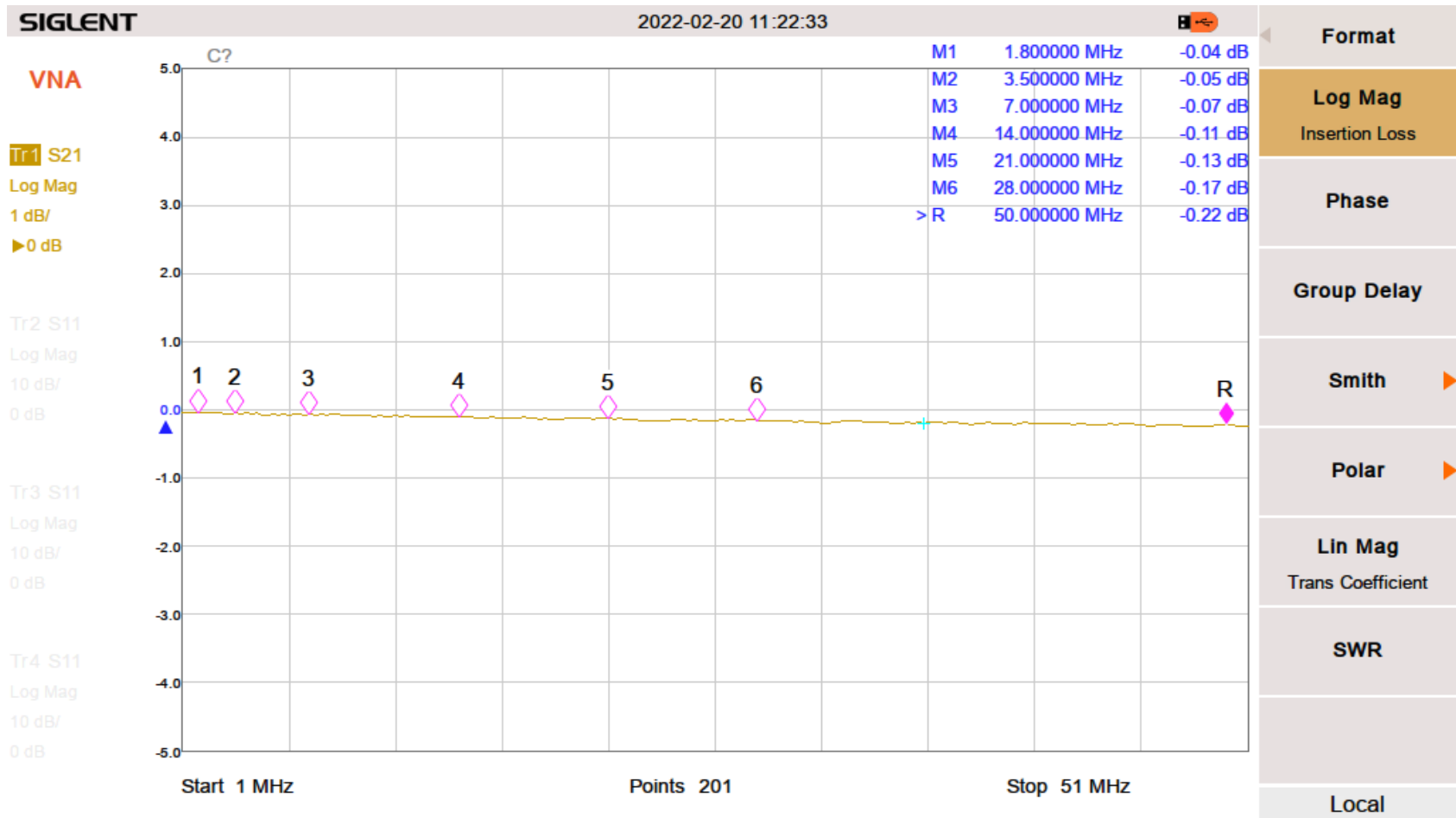


Prüfung SWR



C - Prüfung Sperrdämpfung



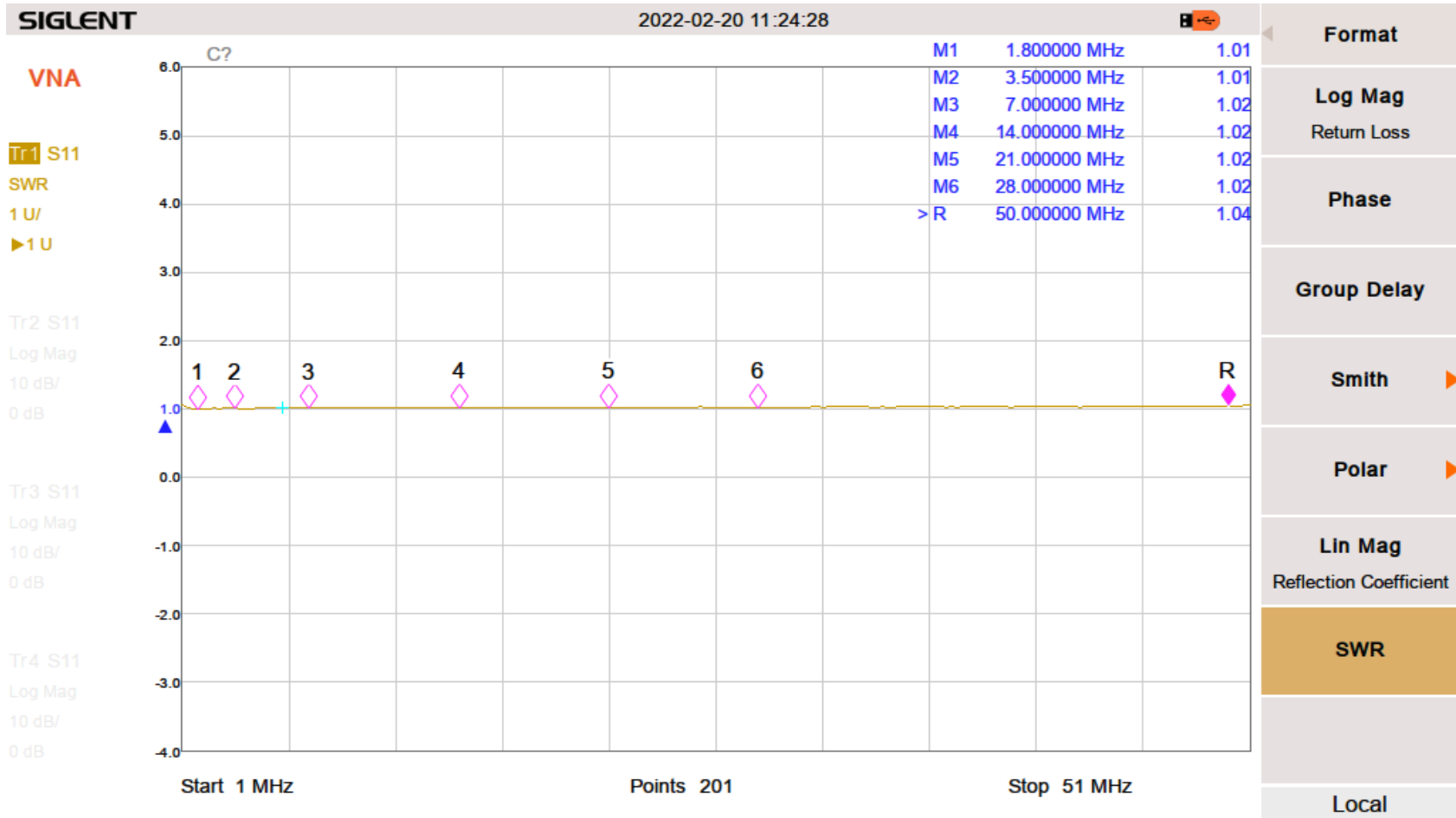


WE-SL2 – 1000 $\mu$ H/744222 als Balun

Übertragungsverluste S21

Helmut – DL2AVH

Serba 6/2022

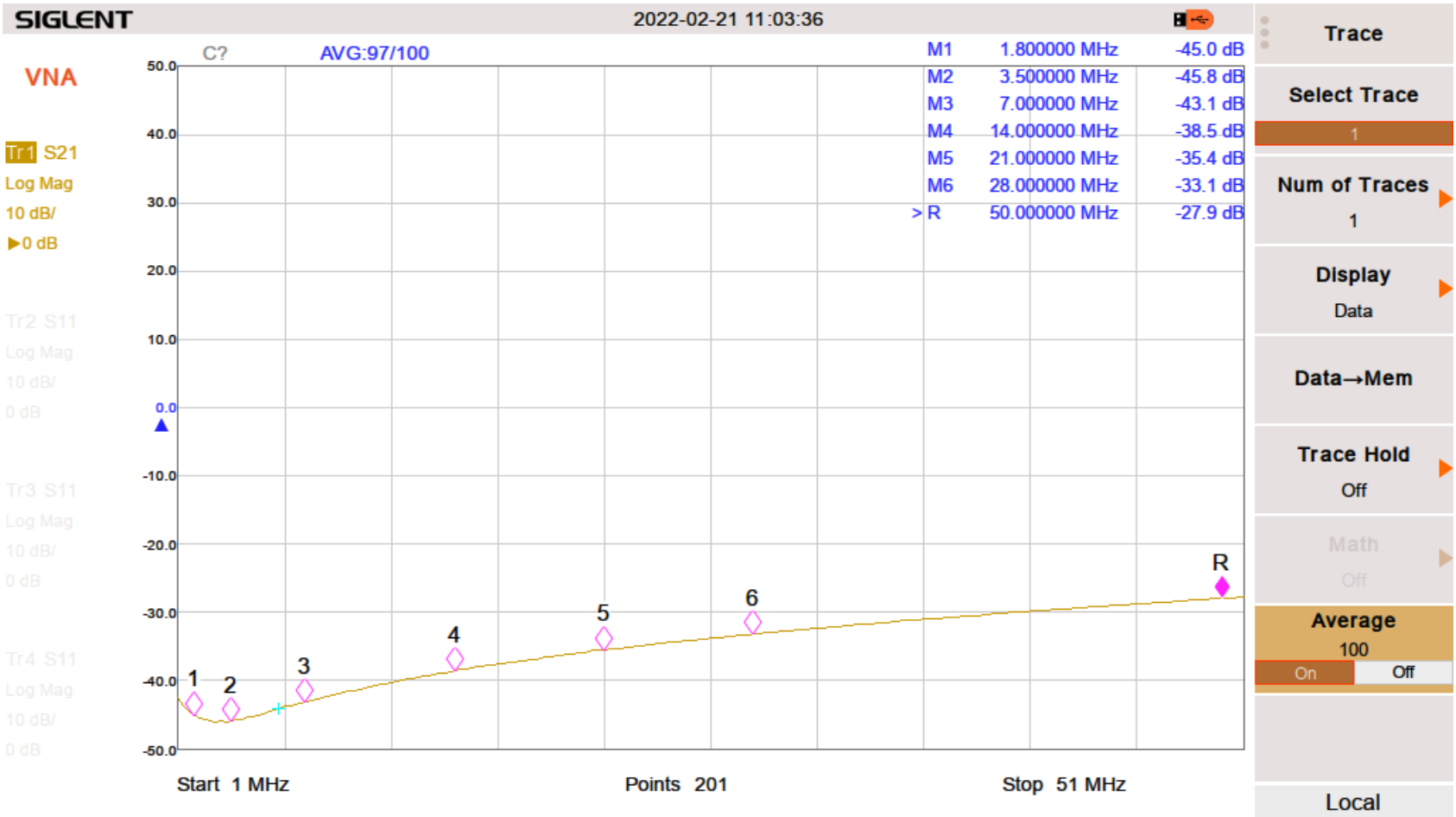


WE-SL2 – 1000µH/744222 als Balun

Prüfung SWR

Helmut – DL2AVH

Serba 6/2022



**WE-SL2 – 1000µH/744222 als Balun**

**Sperrdämpfung S21**

**Helmut – DL2AVH**

**Serba 6/2022**



**Viel Erfolg beim Antennenbau – Antennen immer erdfrei speisen**  
Mehr Infos unter [www.DL2AVH.eu](http://www.DL2AVH.eu)

**Helmut – DL2AVH**

**Serba 6/2022**